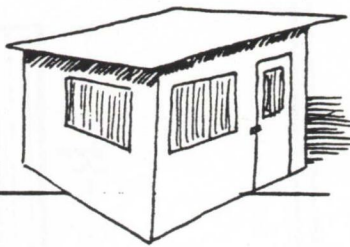


# HAWK HAUS

AN INEXPENSIVE MEWS  
by Lance Morrow



Over the years, we have designed an inexpensive and easy-to-build mews. I find that it is a good mews for the following reasons:

1. It looks good—has good lines and carries a low profile.
  2. The size of the windows and their location provides for good air flow in the summer and they are easy to cover with plastic in the winter.
  3. Takes down in 20 minutes and is easy to transport in the back of a pickup truck.
  4. Can easily be built in a weekend.
  5. Costs under \$250.
- and
6. Is large enough to accommodate enough perches for any type of raptor with the exception of a golden eagle.

As with any hawk house, it is best located in a shady area. If shade is not available a double roof should be installed with a free air space in-between and open at the ends.

## LIST of MATERIALS: (excluding floor)

- 9 — 4' X 8' sheet exterior plywood (3/8, 1/2, or 5/8") 165
- 70 — 1/2" Dowels (36" Length) 70
- 5 — 2"X4"X8' 15
- 3 — 2"X3"X8'—clear pine 6
- 30 — 2"X2"X8'—clear pine 30
- 1 lb. 2" Drywall Nails

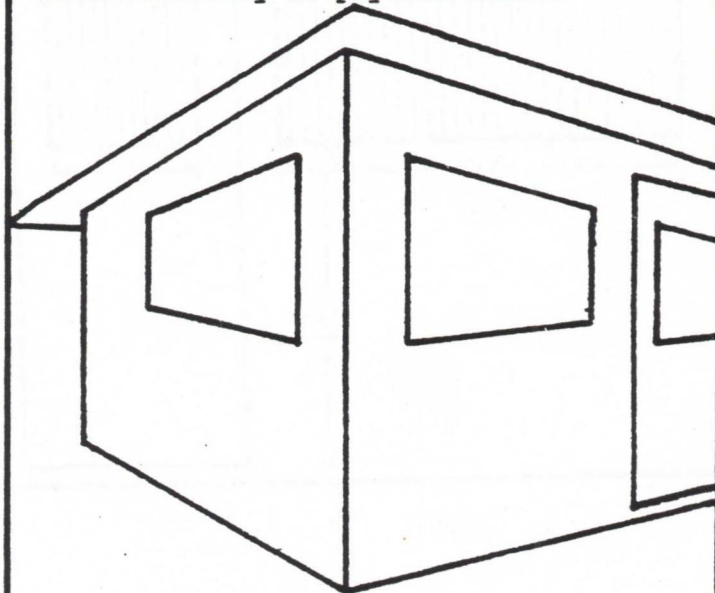
- 2 gals. paint (exterior)
- 1 pr. heavy hinges
- 1 lock hasp
- 12 — 1/4" X 4" Bolts w/ wing nuts

## Tools Required:

- Drill w/ 1/2" and 3/4" bits
- Circular Saw
- Hand Saw
- Hammer
- Measuring Device
- Square

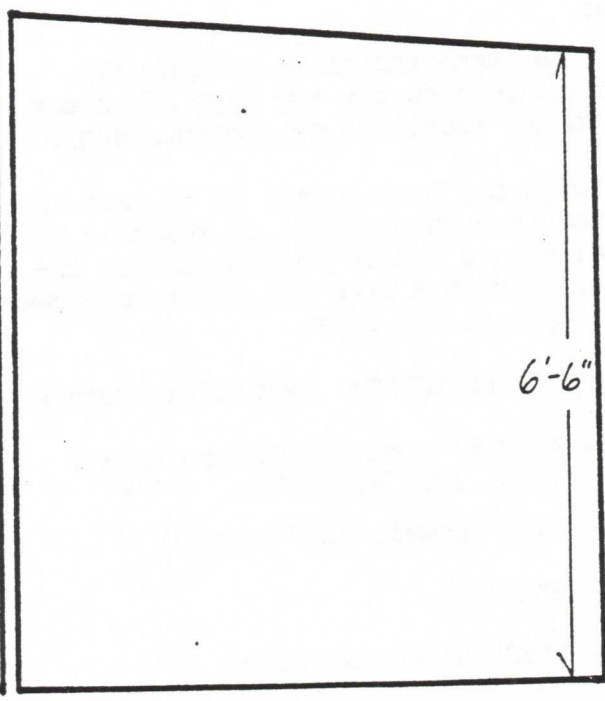
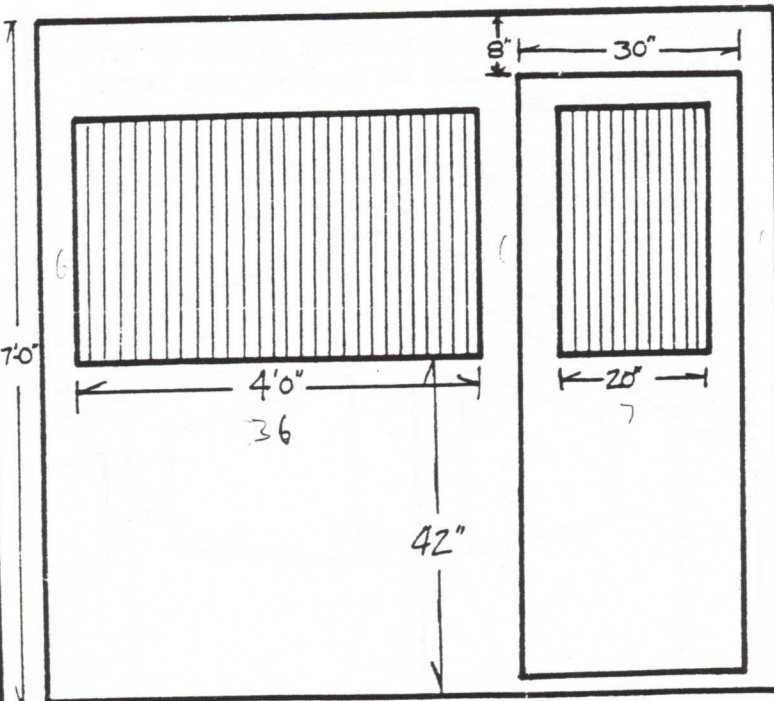
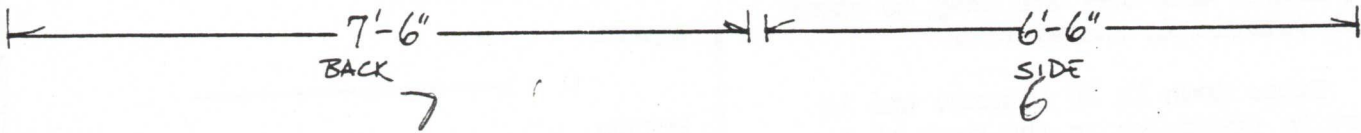
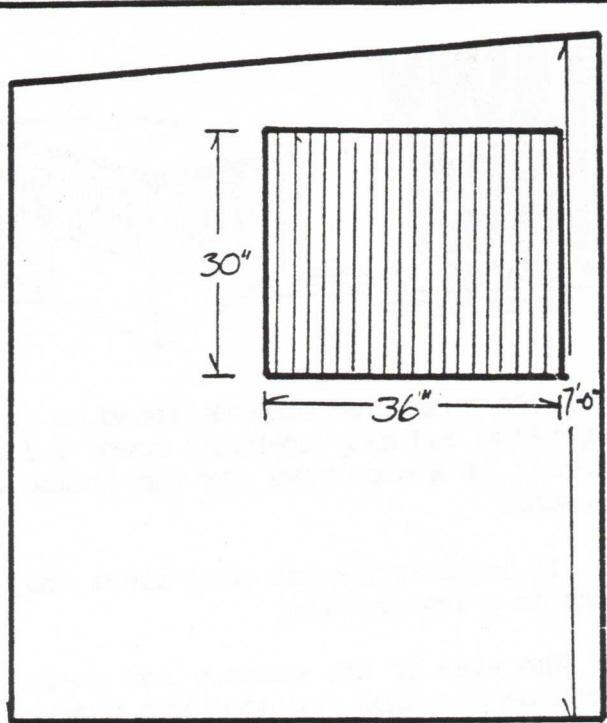
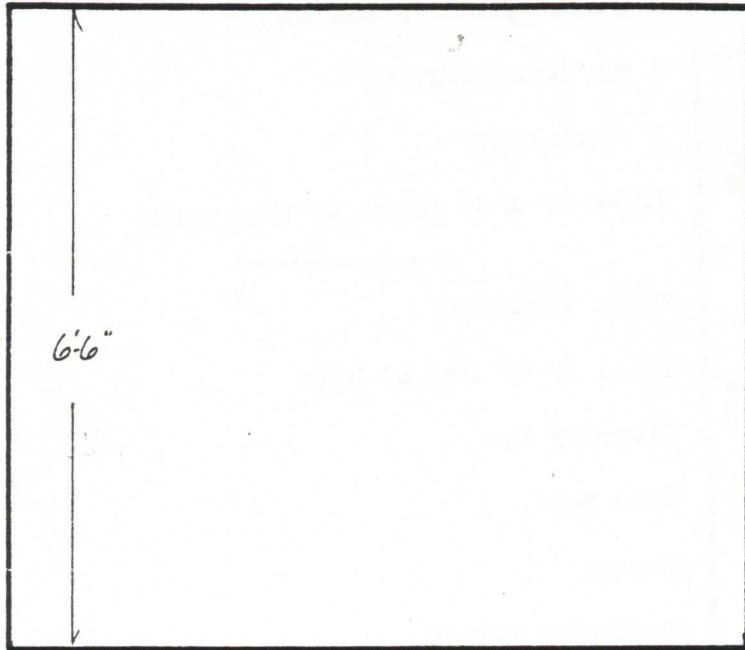
## NOTES:

1. Roof to overlap: 2" on sides  
3" in back  
6" in front
2. Walls should be painted inside and out before erection. Best paint is an oil base exterior to protect the wood from the weather.
3. All framing is joined with drywall nails directly to plywood walls.



SEE FOLLOWING PAGES FOR DIAGRAMS →

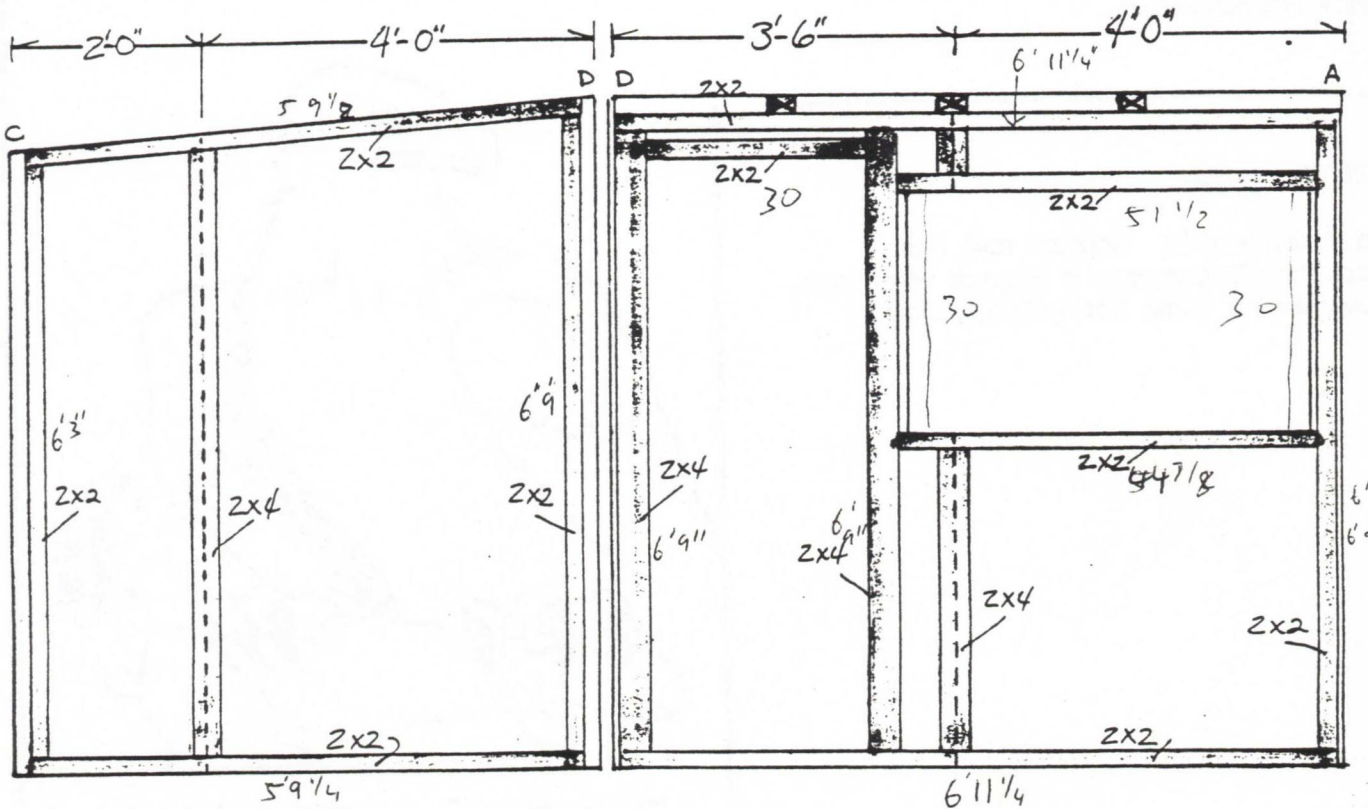
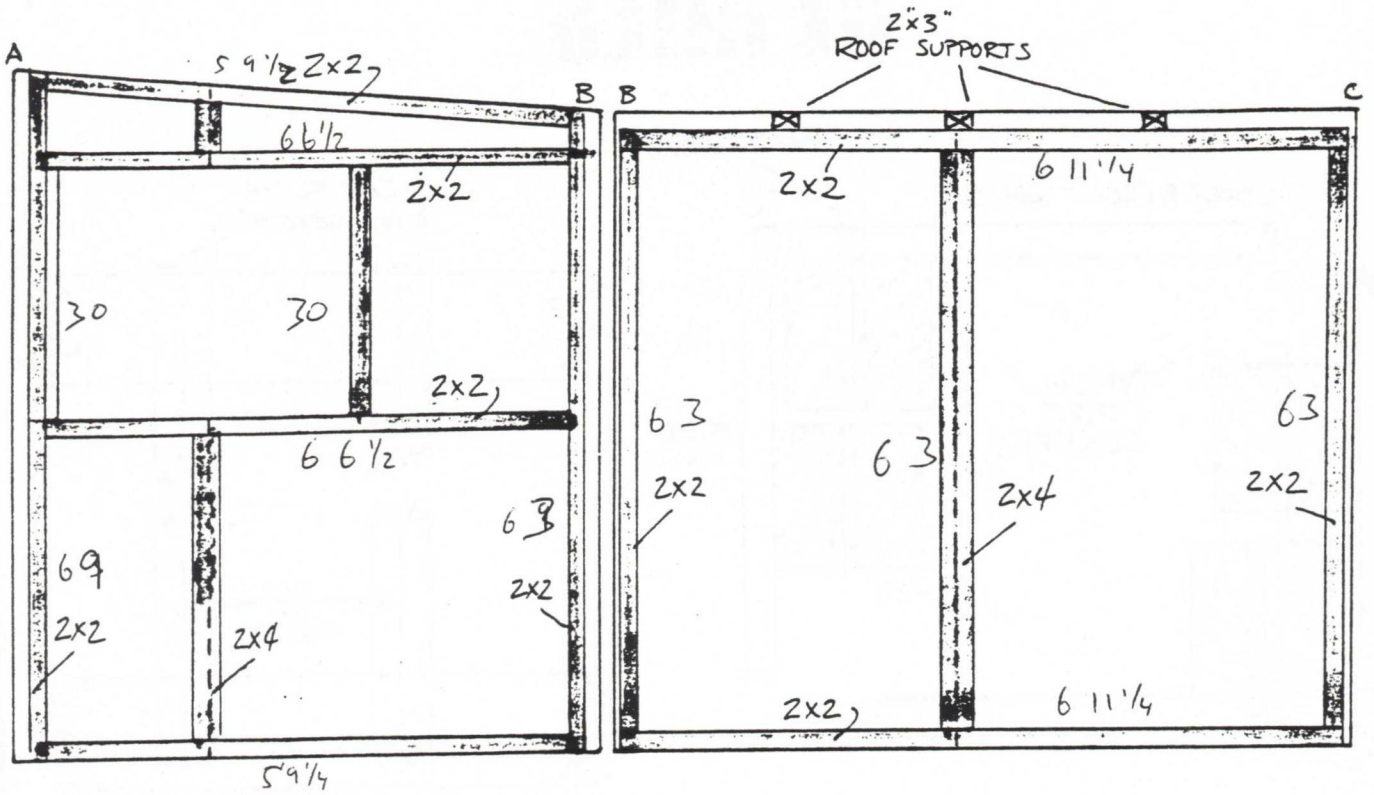
More...



FRONT 7

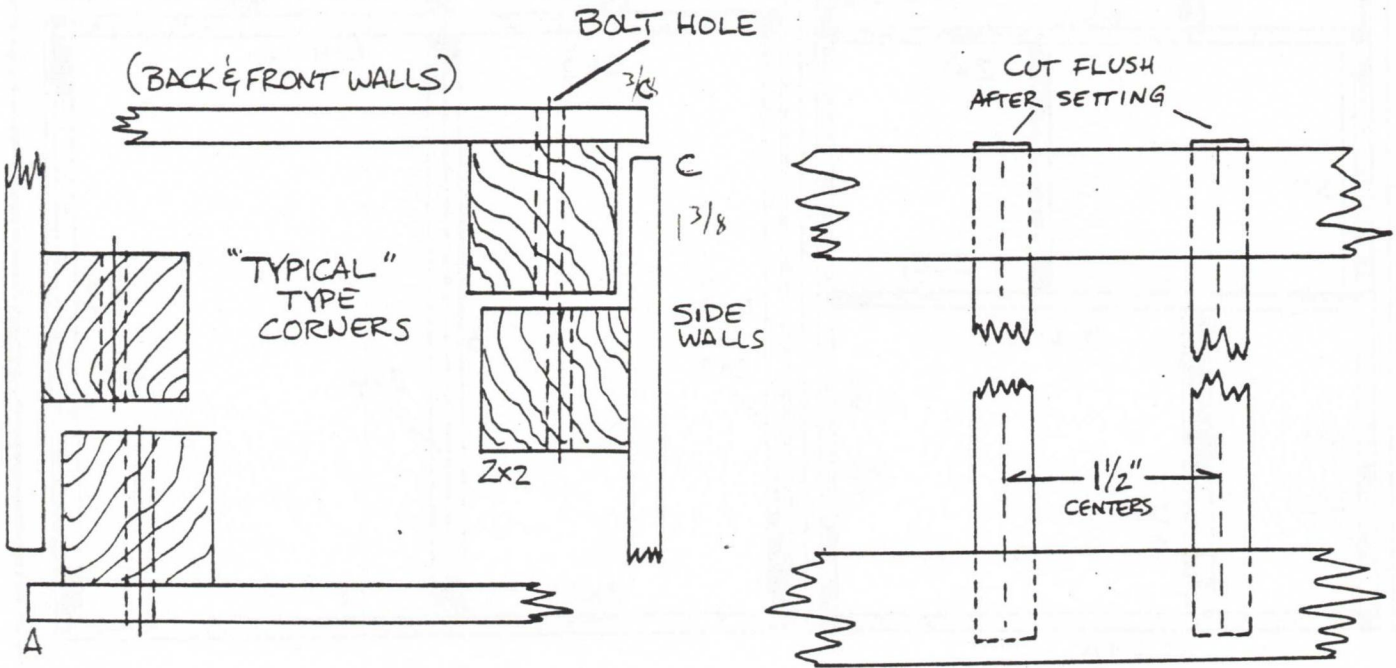
SIDE 6

HAWKHAUS, from p. 22



HAWK HAUS, from p. 23

# DETAILS



If you would like to see a finished example of this design, make an appointment with VFA Vice-President, Lance Morrow.—Ed.

### EDITOR'S NOTE:

The President's Report and the Secretary/Treasurer's Report were not received in time for publication.



"LITTLE HOUSE ON THE PRAIRIE DOG."